

# TEMPLE SHALOM

6930 Alpha Road / Dallas, Texas 75240-3602 / 972-661-1810  
E-mail: [info@templeshalomdallas.org](mailto:info@templeshalomdallas.org) / Website: [www.templeshalomdallas.org](http://www.templeshalomdallas.org)  
Facebook: Temple Shalom Dallas / Instagram: templeshalom\_dallas

FEBRUARY 2024

SHEVAT / ADAR I 5784

VOLUME 58 NO. 7

## Kabbalat Shabbat Service February 16

Join Temple Shalom Clergy and Staff  
Featuring Guest Cantor Lisa Levine  
&  
Temple Shalom Adult Choir

Special Oneg at 6:00pm

Service at 6:30pm



L  
I  
V  
E  
E  
M  
U  
S  
I  
C

## SERVICES, MEETINGS & CLASSES

### THURSDAY ~ February 1

Sisterhood Tikkun Olam Speaker  
7:00pm - via Zoom

### FRIDAY ~ February 2

*Yitro ~ Exodus 18:1 - 20:23*

Traditions Open

2:00pm - 6:25pm

Wine & Cheese Welcome

6:00pm - Congregational Gathering Space

Shabbat Service

6:30pm - Sanctuary

**or** view via

<https://www.facebook.com/templeshalomdallas>

or via livecontrol

<https://templeshalomdallas.org/shabbat-services/>

Davening & Dining Following Service (see Page 4)

### SATURDAY ~ February 3

Torah Study

8:30am - Food / 9:00am - Class

Learning Center and via Zoom

Morning Service

10:30am - Epstein Chapel

Munchkin Minyan

10:30am - Radnitz Social Hall

Brotherhood & Sisterhood Book Club

1:45pm - offsite

### SUNDAY ~ February 4

Garden Work Day

9:30am - 11:30am

Religious School

9:30am - 12:00pm

Traditions Open

9:30am - 12:30pm

Religious School Stay & Schmooze

9:45am - Preschool Foyer

Sisterhood Lunch & Loom

12:00pm - Learning Center

Youth Choir Rehearsal

12:30pm - Sanctuary

Next Dor Sundaes with Rabbi Paley

7:00pm - offsite

### MONDAY ~ February 5

Knitting Hour

2:30pm - via Zoom

Temple Board Meeting

7:00pm - Boardroom

### TUESDAY ~ February 6

Garden Work Day

9:30am - 11:30am (with RSVP)

Traditions Open

11:00am - 2:00pm

Adult Education Series

Let My People Go - Jews & Racial & Ethnic Justice

6:00pm - Boardroom

Music of Healing

7:30pm - via Zoom

### WEDNESDAY ~ February 7

Midweek Hebrew

5:00pm

Next Dor

6:30pm - Youth Lounge

### FRIDAY ~ February 9

*Mishpatim ~ Exodus 21:1 - 22:3*

Sisterhood Gourmet Lunch Bunch

12:30pm - Selda Mediterranean

Traditions Open

2:00pm - 6:25pm

Wine & Cheese Welcome

5:45pm - Congregational Gathering Space

Special Repro Shabbat Service with Sisterhood and

Guest Rabbi Nancy Kasten

6:30pm - Sanctuary

**or** view via

<https://www.facebook.com/templeshalomdallas>

or via livecontrol

<https://templeshalomdallas.org/shabbat-services/>

Davening & Dining Following Service (see Page 4)

### SATURDAY ~ February 10

Torah Study

8:30am - Food / 9:00am - Class

Learning Center and via Zoom

Morning Service

10:30am - Epstein Chapel

Sisterhood Rosh Chodesh

1:00pm - offsite

### SUNDAY ~ February 11

Garden Work Day

9:30am - 11:30am

Religious School

9:30am - 12:00pm

Traditions Open

9:30am - 12:30pm

Shomrei Adamah Meeting

9:30am - Blumin Ceremonial Room

## SERVICES, MEETINGS & CLASSES *(continued)*

### **SUNDAY ~ February 11 (cont.)**

Munchkin Music  
10:00am - Youth Lounge  
Youth Choir Rehearsal  
12:30pm - Sanctuary

### **MONDAY ~ February 12**

Adult Education Great Decisions Class  
12:30pm - Boardroom & via Zoom  
Knitting Hour  
2:30pm - via Zoom  
Sisterhood Board Meeting  
7:00pm - Boardroom

### **TUESDAY ~ February 13**

Garden Work Day  
9:30am - 11:30am (with RSVP)  
*Traditions Open*  
11:00am - 2:00pm  
Adult Education Series  
Let My People Go - Jews & Racial & Ethnic Justice  
6:00pm - Boardroom  
Adult Choir Rehearsal  
6:30pm - Sanctuary

### **WEDNESDAY ~ February 14**

Midweek Hebrew  
5:00pm

### **THURSDAY ~ February 15**

Brotherhood Guys Night Out  
6:30pm - The Midway Point

### **FRIDAY ~ February 16**

*Terumah ~ Exodus 25:1-40*  
*Traditions Open*  
2:00pm - 6:25pm

Sisterhood CHAI & Congregational Shabbat Dinner  
5:00pm - Radnitz Social Hall

Special Wine & Cheese Welcome  
5:45pm - Congregational Gathering Space

Kabbalat Shabbat Service  
with guest Cantor Lisa Levine  
6:30pm - Sanctuary

*or view via*

<https://www.facebook.com/templeshalomdallas>

*or via livecontrol*

<https://templeshalomdallas.org/shabbat-services/>

Davening & Dining Following Service (see Page 4)

### **SATURDAY ~ February 17**

Torah Study  
8:30am - Food / 9:00am - Class  
Learning Center and via Zoom

Morning Service

10:30am - Epstein Chapel

### **SUNDAY ~ February 18**

Garden Work Day  
9:30am - 11:30am

*Traditions Open*

9:30am - 12:30pm

Adult Education Cooking Series  
1:00pm - Temple Kitchen

### **MONDAY ~ February 19**

Knitting Hour  
2:30pm - via Zoom

### **TUESDAY ~ February 20**

Garden Work Day  
9:30am - 11:30am (with RSVP)

*Traditions Open*

11:00am - 2:00pm

Brotherhood Board Meeting  
7:15pm - Boardroom

Music of Healing  
7:30pm - via Zoom

### **WEDNESDAY ~ February 21**

Midweek Hebrew  
5:00pm

*Next Dor*

6:30pm - Youth Lounge

Sisterhood Virtual Boggle Game Night  
7:00pm - via Zoom

### **FRIDAY ~ February 23**

*Tetzaveh ~ Exodus 27:20 - 28:30*

*Traditions Open*

2:00pm - 6:25pm

Wine & Cheese Welcome  
6:00pm - Congregational Gathering Space

Shabbat Service Led by Brotherhood  
6:30pm - Epstein Chapel

*or view via*

<https://www.facebook.com/templeshalomdallas>

Davening & Dining Following Service (see Page 4)

Young Adults Dinner

7:45pm - Ephesus Mediterranean

COVIDeo Chat

8:15pm - via Zoom (see Page 4)

### **SATURDAY ~ February 24**

Torah Study Led by Brotherhood  
8:30am - Food / 9:00am - Class  
Learning Center and via Zoom



## SERVICES, MEETINGS & CLASSES *(continued)*

### **SATURDAY ~ February 24 (cont.)**

Morning Service Led by Brotherhood  
10:30am - Epstein Chapel

### **SUNDAY ~ February 25**

Garden Work Day  
9:30am - 11:30am

Religious School  
9:30am - 12:00pm

Tots Academy  
9:30am - Youth Lounge

*Traditions Open*  
9:30am - 12:30pm

Youth Choir Rehearsal  
12:30pm - Sanctuary

Sisterhood Mah Jongg Tournament  
1:00pm - Radnitz Social Hall

### **MONDAY ~ February 26**

Adult Education Great Decisions Class  
12:30pm - Boardroom & via Zoom

Knitting Hour  
2:30pm - via Zoom

Temple Executive Team Meeting  
7:00pm - Boardroom

### **TUESDAY ~ February 27**

Garden Work Day  
9:30am - 11:30am (with RSVP)

*Traditions Open*  
11:00am - 2:00pm

Adult Education Series  
Let My People Go - Jews & Racial & Ethnic Justice  
6:00pm - Boardroom

Music of Healing  
7:30pm - via Zoom

### **WEDNESDAY ~ February 28**

Midweek Hebrew  
5:00pm

Lifelong Learning Council Meeting  
6:30pm - Boardroom

### **THURSDAY ~ February 29**

Brotherhood Martinis & Mishnah  
6:30pm  
Location TBD

### **FRIDAY ~ March 1**

*Ki Tissa ~ Exodus 30:11 - 31:17*

*Traditions Open*  
2:00pm - 6:25pm

Wine & Cheese Welcome  
6:00pm - Congregational Gathering Space

Shabbat Service  
with Artist-in-Residence Elana Arian  
6:30pm - Sanctuary

**or** view via

<https://www.facebook.com/templeshalomdallas>

or via livecontrol

<https://templeshalomdallas.org/shabbat-services/>

Davening & Dining Following Service (see below)

### **SATURDAY ~ March 2**

Torah Study  
8:30am - Food / 9:00am - Class  
Learning Center and via Zoom

Morning Service  
10:30am - Epstein Chapel

Artist-in-Residence Elana Arian Concert  
7:00pm  
Sanctuary & Radnitz Social Hall

### **Davening and Dining Every Friday Following Services**

Everyone is invited to join together at a local restaurant which will be announced that week.

Contact Toba to be added to the email list: [daveninganddining@templeshalomdallas.org](mailto:daveninganddining@templeshalomdallas.org)

### **COVIdeo Chat for those who want the "online connection" following Friday Night Services *the Last Friday of the Month* 8:15pm - via Zoom**

**Zoom Meeting** <https://us02web.zoom.us/j/82820867321?pwd=TJRjMXV6SnhIZUt1QktWQTVVTmF2Zz09>

**Meeting ID:** 828 2086 7321 **Passcode:** SHABBAT

**RSVP by 8:00pm on that Friday** to Toba Reifer [daveninganddining@templeshalomdallas.org](mailto:daveninganddining@templeshalomdallas.org)

Please Join the Sisters of Shalom, Mandy Monreal  
and Special Guest Rabbi Nancy Kasten  
For a Special Shabbat Service

# Heal Us Now

February 9, 2024 - 1 Adar 1, 5784

5:45pm - Wine and Cheese Reception

Followed by 6:30pm Service in the Sanctuary

Join with communities across the world as we gather to celebrate Repro Shabbat honoring the Jewish value of reproductive freedom.

We will blend traditional Shabbat prayers, prose, and song with some specially selected pieces.

We will be collecting donations of feminine hygiene products prior to services.



If you are interested in taking part in the service,  
please contact Robyn Carafiol at  
[rcarafiol@robinsonclay.com](mailto:rcarafiol@robinsonclay.com) by February 1st.



**CHAI DINNER**  
**Friday, February 16**  
**Traditional Chicken Dinner**  
**5:00pm -- Radnitz Social Hall**

**Everyone** is invited to join us for a very special CHAI Dinner and Shabbat Service with Special Guest Cantor Lisa Levine. CHAI serves adults with intellectual disabilities and provides residential options, outreach, and services to those living in the community, as well as operating a day habitation program. The CHAI residents and their families will be Sisterhood's guests.

**Adults: \$15   Children: \$8   Under 5: Free**

Register and pay online at: <https://tinyurl.com/CHAI dinner24>  
or contact Robyn Carafiol at [rcarafiol@robinsonclay.com](mailto:rcarafiol@robinsonclay.com) to pay by check.

**Please RSVP no later than Tuesday, February 13.**

# Young Adults!

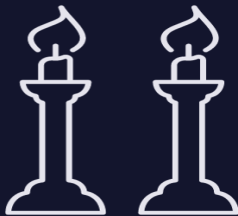
## Shabbat Service & Dinner

**Friday, February 23**  
**Temple Shalom**  
**6:00pm-9:00pm**

**Young Adults - 20's & 30's-**  
**6:00pm Oneg**  
**6:30pm Service**  
**7:45pm Dinner at**  
**Ephesus Mediterranean Grill**

**Meet new friends & have fun!**

RSVP at <https://forms.gle/1xgaJtuGNNDxdsER6>



[www.templeshalomdallas.org](http://www.templeshalomdallas.org)



**Be a part of the Temple Shalom Garden!**

[garden@templeshalomdallas.org](mailto:garden@templeshalomdallas.org)



**Sunday Coffee & Conversation: Every Sunday 9:30am-11:30am**

We've got hot coffee, sweet pastries, and lots of friendly faces. Meet at the pergola, weather permitting.

**Tuesdays 9:30am-11:30am** (with RSVP to let us know you are coming)

Join us for our garden maintenance and all the important jobs that keep the garden going.

**Use our Sign Up Genius to let us know you will be there.**

<https://www.signupgenius.com/go/10c0d4eafa728a4f4cf8-volunteer>

***Temple Shalom is building a Justice Garden to help feed the hungry, & YOU can be a part of it!***

Be a part of the garden every Sunday & Tuesday, and you will be able to say, "I fed the hungry".

***All ages and abilities welcome.***

## *I Was Just Thinking...*



February is the Jewish Disability Awareness, Acceptance and Inclusion month. Established in 2009 by the Jewish Special Education International Consortium it is a unified effort among Jewish organizations worldwide to raise awareness and make a commitment to foster acceptance and inclusion so people with disabilities and mental health conditions and those who love them feel a sense of belonging. JDAIM is a call to action to each one of us to act in accordance with our Jewish values, honoring the gifts and strengths that we each possess.

Shelley Christiansen, Co-founder of JDAIM teaches, "...In Parashat Bo when Pharaoh asks Moses who is leaving Egypt with him after the locust plague, "Who are the ones to go?" Moses responds, "We will all go, regardless of social station. We will go with our sons, our daughters, our flocks, our herds—for we must observe God's festival." The Torah teaches that everyone belongs simply because we are human. We don't include some people and leave others behind. Yet there are many people who long to belong, people who are shut out because there are still the doors to our communities that are guarded. We can do better.

Further we are taught in Leviticus 19:14, "You shall not insult the deaf nor place a stumbling block before the blind. Stumbling blocks come in many forms, from less accessible buildings, Shabbat services, prayer books and web pages. We are obliged to remove these stumbling blocks and more, as Judaism deeply cares about the rights of those with different abilities.

During the High Holy Days, I spoke about becoming an influencer and how every day people can make every day better. I spoke about changing for the better – that we have an opportunity to bring about moments that elevate our hearts and spirits for ourselves and for others; about influencing how others might think about the issues that are of import and significance in our community, about eliminating the barriers that stop us from becoming the best version of ourselves and the best versions of our community and great power we have to create influence for good and the responsibility that comes with that power. This month gives us a chance to influence - for good - the world around us towards awareness, acceptance and inclusion of those in our midst whose disabilities prevent them from feeling fully a part of the community. To be sure, we as a people in general and Temple Shalom in particular have a long way to go to continue to raise awareness about disability and inclusion issues, change our physical surroundings to better accommodate those in need and better adapt policies and procedures for optimal inclusion and wider welcome. As Rabbi Bardley Artson so beautifully teaches, "The Mishna tells us clearly, 'Don't look at the flask, but what it contains.' In teaching ourselves to see the inner sparks that light a person's soul, rather than merely glancing at the casing that holds those precious assets of personality, aspiration and caring, we can act like God in the wilderness, healing when we can and transcending limits when we cannot."

If we truly believe in belonging, if we truly believe in the power of the commandments to ease stumbling blocks, if we truly believe that all of us together must reach the promised land, if we truly believe we can influence for good, then let's renew our efforts together, to be more inclusive, more aware, more sensitive to the needs of others.

I know I could have and should have been better in this work of our community. I hope you will join with me in this effort going forward. We can do less and for sure we can do so much more.

For more information please visit, [www.inclusioninnovations.com/jdaim](http://www.inclusioninnovations.com/jdaim)

Rabbi Andrew Paley  
[apaley@templeshalomdallas.org](mailto:apaley@templeshalomdallas.org)



## Presidential Nu's



Let me begin by saying this is my opinion, and the opinions stated herein should not be attributed to official temple policy. As president I am given the opportunity to write an article, and I am using this article to provide one person's view on the world as we know it in relationship to Judaism.

For years I taught religious school at Temple Shalom, and my subject was Holocaust studies. From 1988 – 2010 or so, I shared with my pupils that their current experience of a lack of antisemitism was an anomaly, and that the Holocaust was the culmination of years of antisemitism. Antisemitism was the norm prior to the Holocaust, but the Holocaust was mass extermination, not the "traditional" intimidation, discrimination, periodic murder, pogroms, or forced conversion. As a result of the Holocaust, there was a brief fallout that saw antisemitism become less overt because there was some level of sympathy or fear of being linked with atrocities. Jews were still excluded from country clubs, still not sold houses in restricted neighborhoods, and might not receive the promotions they earned, but there were no longer signs on beaches that said, "No Jews or dogs allowed."

Israel also changed the world's view of Jews. Israel began as a country treading water to stay alive, and the non-Muslim world felt for Israel when they were being attacked, yet each time they were attacked, as they gained the upper hand defending themselves, the United Nations would jump in and demand a ceasefire. Each time Israel was the victim of suicide bombings, rocket attacks, or other terrorism, the world would call it terrible; when Israel responded they were castigated for being "excessive."

Recently, when Israelis found themselves the victim of Hamas's pogrom, the world recoiled in horror. The unbelievable savagery of the murders, taking hostages, and the celebrations in the street sickened the non-Muslim world. Yet, when Israel began taking actions to decimate Hamas's ability to repeat their actions the world began to call for a ceasefire. "Innocent victims are being killed" (which presupposes the victims of Hamas were not innocent victims). It would be one thing if "innocent" "Palestinians" were turning over members of Hamas, telling Israelis where Hamas was hiding, trying to help the hostages get free, or doing anything but shielding Hamas the entire time. And we all know Hamas is the reason those "innocent" "Palestinians" were being killed; Israel did not initiate the war.

But what I have come to realize is that the world sympathizes with victimized Jews. Of course, the world condemns the Holocaust, cries for a few days over those massacred in Munich (before starting the games again) and watched the footage in horror during Hamas's pogrom. But the world will not accept when the Jews are strong, when we defend ourselves, and when we avenge the murder of our people. Then the United Nations steps in and says "too much," and suddenly it is the Jews that avenge the victims who are now deemed the "perpetrators."

We should not apologize for Israel's efforts to root out Hamas. The liberal in me has to give in and support Israel, and that means until every hostage is released, and until Israel finds itself safer. If the "Palestinians" want peace, if they want to stop "innocent" people from being harmed, let them turn over the *innocent* hostages and identify Hamas members. Unbelievably, Hamas continues to launch rockets and the world ignores it. Until Hamas surrenders and the hostages are all returned, the blood being shed is all on Hamas, not Israel.

Peace between Israel and the "Palestinians" clearly will never be achieved through negotiations. The Book of Isaiah says, "They shall beat their swords into ploughshares, and their spears into pruning hooks; nation shall not lift up sword against nation, neither shall they learn war any more." Isaiah did not say, "They shall *negotiate* their swords into ploughshares." Sadly, force may be the only avenue to peace.

I recognize you may not share my opinion. But I welcome you to share with me your opinion, so we can talk about issues like this. It takes all types of opinions to make a community, and a Jewish community requires at least one or two opinions per person on every subject.

*Dennis*

Dennis Eichelbaum

[president@templeshalomdallas.org](mailto:president@templeshalomdallas.org)





# LIVE MUSIC WEEKEND

**SAVE THE DATE!**

**MARCH 1-3**

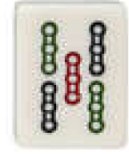
Join us for our Elana Arian  
Artist-in-Residence weekend.

Watch for more details  
coming soon!

TEMPLE SHALOM



# COME ONE - COME ALL



Everyone is invited to join other Mah Jongg lovers  
for three rounds of exciting tournament play at

**Temple Shalom Sisterhood's**

# Mah Jongg Tournament

**Sunday, February 25  
1:00-5:00pm**

(Registration/Check-in begins at 12:00 / Doors open at 12:30)

Registration fee of \$36 includes snacks & door prizes

**Radnitz Social Hall**

All cash prizes awarded to the top players!

To register go to

<http://tinyurl.com/sistersmahj24>

For more information or to register another way, contact  
Laney Arndt at [laney229@gmail.com](mailto:laney229@gmail.com) or 469.964.5319

*Come early and shop our beautiful merchandise at  
Traditions Gift Shop!*

*"Mah Jongg—sort of like life, the concept of it is to create order  
out of chaos based on random drawing of tiles."*

*--Julia Roberts*



**Registration deadline: Tuesday, February 20**

# Music of Healing

JOIN MANDY EVERY TUESDAY AT 7:30PM FOR SOME TIME OF REFLECTION IN SONG.  
REGISTRATION REQUIRED PRIOR TO EACH SESSION.

ZOOM REGISTRATION: [HTTPS://US02WEB.ZOOM.US/MEETING/REGISTER/TZARF-MQR00HNPJUDTECJ\\_BSDXMUZ9-J0-H](https://us02web.zoom.us/meeting/register/tzarf-mqr00hnpjudtecj_bsdxmuz9-j0-h)

TEMPLE SHALOM

No Meeting on February 13.

## Connections Council

### Caring Congregation Committee - **We Need YOU**

The Caring Congregation Committee is looking for members to fulfill the guiding purpose of Temple Shalom... **"to build holy community, connecting our congregants to one another..."** We want to build a network of volunteers who support our members in times of sorrow, healing and joy.

If you have a talent for writing or if you enjoy the personal contact of visiting a member to deliver a gift bag and personal conversation, please contact [caring@templeshalomdallas.org](mailto:caring@templeshalomdallas.org) and one of our Chairs, **Carolyn Landers** or **Jacque Comroe**, will follow up to match your talents to our growing desire to serve our members. We have a growing need and we invite you to join our outreach.

**Please contact us today.**



### Knitting Hour

**Mondays / 2:30pm / via Zoom**

**Zoom link information will be in the weekly emails.**

Bring any creative projects you are working on, needle point, crocheting, knitting, coloring, beading, etc.... We will schmooze, create, and talk about creative projects we can work on.

Ellen: February 5, 12

Markita: February 19, 26

Questions? Contact Markita & Ellen at [knitting@templeshalomdallas.org](mailto:knitting@templeshalomdallas.org)



Adult Education Programs

Interested in learning more about Adult Education?

Please contact Co-Chairs Harriet Bell & Kathryn Frish at [adulthood@templeshalomdallas.org](mailto:adulthood@templeshalomdallas.org)

# Adult Education

## New Series

### Let My People Go —

Jews and Racial and Ethnic Justice

**PRESENTED BY BARRY LACHMAN,  
TEMPLE SHALOM CONGREGANT**

**Session 1: Tuesday, February 6 - Theologic and  
Spiritual Basis and History of Racism**

**Session 2: Tuesday, February 13 - Jewish & Black  
Discrimination in America and Dallas**

FEATURING GUEST SPEAKER **REVEREND PETER JOHNSON**,  
PROMINENT CIVIL RIGHTS LEADER WHOSE HISTORY  
OF ACTIVISM IN DALLAS SPANS OVER FOUR DECADES.

**Session 3: Tuesday, February 27 - A Parallel Story:  
Jews and the South African Struggle for Liberation  
and the Way Forward**

FEATURING GUEST SPEAKER **JOSEPH GREEN-BISHOP**,  
CO-FOUNDER OF DALLAS BLEWS, AN ORGANIZATION TO  
FOSTER RELATIONSHIPS BETWEEN JEWS AND BLACKS AND  
A FORMER MAGAZINE PUBLISHER IN SOUTH AFRICA

**6:00pm in the Temple Shalom Boardroom  
A light dinner will be served.**

**Register for one session or all three. FREE!**

**Registration: <https://templeshalomdallas.org/jewish-life/>**

**Questions? Email [adulthood@templeshalomdallas.org](mailto:adulthood@templeshalomdallas.org)**

TEMPLE SHALOM



# Adult Education Traditions In the Kitchen

## MODERN JEWISH COOKING

This three-part series pays homage to traditional Jewish foods while reflecting the values of modern-day cooks.

Sessions focus on established traditions and a celebration of the way we eat now.

Recipes for some of the classics of Jewish culinary culture – Challah, Kugel, and Purim Noshes – will be prepared and shared.



**Sundays at 1:00pm in the Temple Shalom Kitchen**

### Session 1 on 2/18: *Challah with a Modern Jewish Baker*

Modern Baker and Working Mama Emma Darling presents a foundational challah recipe, followed by a handful of innovative ingredients and flavor combinations.

### Session 2 on 3/3: *Cooking With a K: Kugels*

Barbara Guskin shares modern style kugel recipes, sweet and savory, with short cuts and innovative flavors.

### Session 3 on 3/17: *Purim Noshes Reimagined*

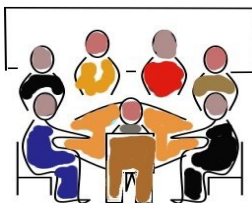
Karen Stock demonstrates creative ideas to celebrate Purim – from savory noshes to imaginative hamantaschen.



\$9/per adult per session. Register for one session or all three.  
Register at <https://templeshalomdallas.org/american-jewish-culture/>



[www.templeshalomdallas.org](http://www.templeshalomdallas.org)



### Torah Study Every Saturday

**8:30am Food / 9:00am Study    Learning Center AND via Zoom**

Torah study at Temple Shalom is an interactive, lively & engaging exploration of Torah, Hebrew Bible & related information. Each week, Rabbi Paley leads an exploration into the meaning & influences of biblical texts (in English) & the impact it has on our lives, our communities & our world. All are welcome to join us as we examine the Book of the Prophets. Bring a friend, your own Bible or use one from Temple, and your willingness to learn! **Zoom information is in the weekly emails.**



**Adult Education has a web page of resources for Learning@Home.**

The address is <https://templeshalomdallas.org/learninghome/>

We also have a Technology Tips page: <https://templeshalomdallas.org/technology-tips/>

## Lifelong Learning/Worship Council



**How does my family story fit into the Jewish story?** This is the BIG Question our 3<sup>rd</sup>-6<sup>th</sup> grades are now exploring. After learning about our Jewish family from the Book of Genesis last semester, learners are now digging into their own family stories. We know our Temple Shalom families come in all shapes and varieties and we are so excited to learn about how we all fit together.

Learners will lean into our **value of wonder**, exploring how their family came to the United States and ultimately to Dallas. Through family stories we will learn about the history and culture of Jewish people around the world. We will especially focus on how food and recipes are one way we pass on our family stories and traditions. Together we will create a

**Temple Shalom Family Cookbook**, highlighting not only recipes, but family stories, pictures and traditions. **If YOU have a family story and recipe you would like to include, please feel free to reach out.** Once the cookbook is completed, we will be sure to share it with our full Temple Shalom family.

### As part of our exploration learners will:

- Hear individual family stories and conduct family interviews
- Learn about what makes food Jewish and create a unique Temple Shalom Justice Garden Recipe
- Be visited by an early 20<sup>th</sup> century immigrant through the American Jewish Museum
- Cook together and share family traditions
- Experience the difficult choices made by Jewish immigrants through Rabbi Roseman's *Choose-Your-Own-Adventure* books
- Think about their own responsibility to pass on Jewish stories, food and traditions to future generations

And **parents will have a unique opportunity** to learn as well. At our **February 3<sup>rd</sup> Stay and Schmooze** I will share more details about what children will be learning and we will be visited by Janette Silverman, Senior Genealogist at Ancestry, to learn about how to explore your family story using genealogy tools. **This Stay and Schmooze session is open to our entire Temple Shalom community.** If you are interested in learning more about Jewish genealogy, please join us!

*Debbie*

Debbie Niederman, RJE  
Director of Lifelong Learning  
[dniederman@templeshalomdallas.org](mailto:dniederman@templeshalomdallas.org)

### Upcoming Events:

- February 3 Munchkin Minyan
- February 4 Stay and Schmooze Parent Learning: BIG Question #2 & Jewish Genealogy
- February 11 Munchkin Music
- February 18 No Classes – President's Day Weekend
- February 25 Tots Academy

### Next Dor Events:

- February 4 Sundaes with the Rabbi
- February 7 Cooking and Conversation
- February 9-12 L'Taken Trip to Washington DC
- February 16 L'Taken Trip Participants Speaking at Shabbat Services
- February 21 Cooking and Conversation

### STAY AND SCHMOOZE Sundays

**9:45am-11:30am / Boardroom**

Calling all religious school parents to join Sisterhood or Brotherhood for a morning of food, fun, and conversation. Enjoy coffee, donuts, and bagels while participating in a fun activity and meeting some new friends.

**March 3 – Gateway Family House speaker and Sack the Snacks with Sisterhood**

**April 21 – Passover Recipe Exchange with Brotherhood**



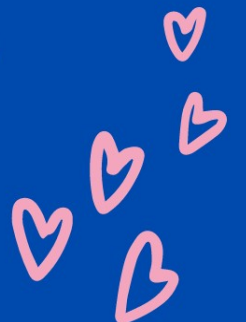
# MUNCHKIN MINYAN



Friendship & Love

Saturday, February 3

10:30am



RSVP by 1/31 at <https://templeshalomdallas.org/munchkin-minyan/>

# February 2024 / 5784

SUNDAY	MONDAY	TUESDAY	WEDNESDAY	THURSDAY	FRIDAY	SATURDAY
				<b>1</b> Sisterhood Tikkun Olam Speaker 7:00pm via Zoom	<b>2</b> Traditions Open 2:00pm-6:25pm Wine & Cheese 6:00pm  Shabbat Service 6:30pm Sanctuary and via Facebook and via Livecontrol  Davening & Dining after service at selected restaurant	<b>3</b> Torah Study 8:30am food 9:00am class Learning Center & via Zoom  Morning Service 10:30am Epstein Chapel  Munchkin Minyan 10:30am Radnitz Soc. Hall S'hood & B'hood Book Club 1:45pm offsite
<b>4</b> Garden Work Day 9:30am-11:30am  Religious School 9:30am  Traditions Open 9:30am-12:30pm  Religious School Stay & Schmooze 9:45am Preschool Foyer  Sisterhood Lunch & Loom 12:00pm Learning Center  Youth Choir Reh. 12:30pm Sanct.  Next <i>Dor</i> Sundaes with Rabbi 7:00pm offsite	<b>5</b> Knitting Hour 2:30pm via Zoom  Temple Board Meeting 7:00pm Boardroom	<b>6</b> Garden Work Day 9:30am-11:30am  Traditions Open 11:00am-2:00pm  Adult Ed. Series 6:00pm Boardroom  Music of Healing 7:30pm - via Zoom	<b>7</b> Midweek Hebrew 5:00pm  Next <i>Dor</i> 6:30pm	<b>8</b>	<b>9</b> Sisterhood Gourmet Lunch 12:30pm offsite  Traditions Open 2:00pm-6:25pm  Wine & Cheese 5:45pm  Repro Shabbat Service with guest Rabbi Nancy Kasten 6:30pm Sanctuary and via Facebook and via Livecontrol  Davening & Dining after service at selected restaurant	<b>10</b> Torah Study 8:30am food 9:00am class Learning Center & via Zoom  Morning Service 10:30am Epstein Chapel  Sisterhood Rosh Chodesh 1:00pm Offsite
<b>11</b> Garden Work Day 9:30am-11:30am  Religious School 9:30am-12:00pm  Traditions Open 9:30am-12:30pm  Shomrei Adamah Meeting 9:30am Blumin Rm  Munchkin Music 10:00am Youth Lng  Youth Choir Reh. 12:30pm Sanct.	<b>12</b> Adult Education Great Decisions 12:30pm Boardroom & via Zoom  Knitting Hour 2:30pm via Zoom  Sisterhood Board Meeting 7:00pm Boardroom	<b>13</b> Garden Work Day 9:30am-11:30am  Traditions Open 11:00am-2:00pm  Adult Ed. Series 6:00pm Boardroom  Adult Choir Rehearsal 6:30pm Sanct.	<b>14</b> Midweek Hebrew 5:00pm	<b>15</b> Brotherhood Guys Night Out 6:30pm Offsite	<b>16</b> Traditions Open 2:00pm-6:25pm  S'hood CHAI & Congregational Shabbat Dinner 5:00pm Radnitz SH  Special Wine & Cheese 5:45pm  Kabbalat Shabbat Service with Guest Cantor Lisa Levine 6:30pm Sanctuary and via Facebook and via Livecontrol  Davening & Dining after service at selected restaurant	<b>17</b> Torah Study 8:30am food 9:00am class Learning Center & via Zoom  Morning Service 10:30am Epstein Chapel



# February 2024 / 5784

SUNDAY	MONDAY	TUESDAY	WEDNESDAY	THURSDAY	FRIDAY	SATURDAY
<p><b>18</b> Garden Work Day 9:30am-11:30am Traditions Open 9:30am-12:30pm Adult Education Cooking Series 1:00pm Temple Kitchen</p>	<p><b>19</b> Knitting Hour 2:30pm via Zoom</p>	<p><b>20</b> Garden Work Day 9:30am-11:30am Traditions Open 11:00am-2:00pm Brotherhood Board Meeting 7:15pm Boardroom Music of Healing 7:30pm - via Zoom</p>	<p><b>21</b> Midweek Hebrew 5:00pm Next <i>Dor</i> 6:30pm Sisterhood Virtual Boggle Game Night 7:00pm via Zoom</p>	<p><b>22</b></p>	<p><b>23</b> Traditions Open 2:00pm-6:25pm Wine &amp; Cheese 6:00pm Shabbat Service Led by Brotherhood 6:30pm Epstein Chapel and via Facebook Davening &amp; Dining after service at selected restaurant Young Adults Dinner 7:45pm Ephesus COVIDeo Chat 8:15pm via Zoom</p>	<p><b>24</b> Torah Study Led by Brotherhood 8:30am food 9:00am class Learning Center &amp; via Zoom Morning Service Led by Brotherhood 10:30am Epstein Chapel</p>
<p><b>25</b> Garden Work Day 9:30am-11:30am Religious School 9:30am-12:00pm Tots Academy 9:30am Youth Lnge Traditions Open 9:30am-12:30pm Youth Choir Reh. 12:30pm Sanct. Sisterhood Mah Jongg Tournament 1:00pm Radnitz Social Hall</p>	<p><b>26</b> Adult Education Great Decisions 12:30pm Boardroom &amp; via Zoom Knitting Hour 2:30pm via Zoom Temple Exec. Team Meeting 7:00pm Boardroom</p>	<p><b>27</b> Garden Work Day 9:30am-11:30am Traditions Open 11:00am-2:00pm Adult Ed. Series 6:00pm Boardroom Music of Healing 7:30pm - via Zoom</p>	<p><b>28</b> Midweek Hebrew 5:00pm Lifelong Learning Council Meeting 6:30pm Boardroom</p>	<p><b>29</b> Brotherhood Martinis &amp; Mishnah 6:30pm offsite</p>	<p><b>March 1</b> Traditions Open 2:00pm-6:25pm Wine &amp; Cheese 6:00pm Shabbat Service with Artist-in-Residence Elana Arian 6:30pm Sanctuary and via Facebook and via Livecontrol Davening &amp; Dining after service at selected restaurant</p>	<p><b>2</b> Torah Study 8:30am food 9:00am class Learning Center &amp; via Zoom Morning Service 10:30am Epstein Chapel Artist-in-Residence Elana Arian Concert 7:00pm Sanctuary &amp; Radnitz Social Hall</p>

# Tikkun Olam Council

Interested in learning more about the Tikkun Olam Council?  
Contact Tikkun Olam Chair Debra Levy-Fritts at [tikkunolam@templeshalomdallas.org](mailto:tikkunolam@templeshalomdallas.org).



## Temple Shalom Grief Support Group

The period of time following the loss of a beloved spouse or partner is often overwhelmingly lonely and confusing. This is an opportunity to gather and share experiences and comfort. If you or someone you know is interested in joining us, please contact us.

**Non-members are welcome.**

Lory Kohleriter: [lorykohl@aol.com](mailto:lorykohl@aol.com) / Maureen Timken: [mtimken@gmail.com](mailto:mtimken@gmail.com)



## Shomrei Adamah “Guardians of the Earth” Monthly Meeting

**Sunday, February 11**

**9:30-10:30am - Blumin Ceremonial Room**

The Shomrei Adamah (Guardians of the Earth) committee is dedicated to improving Temple Shalom’s sustainability efforts and increasing awareness of our shared and individual responsibility to honor and protect God’s creation. Our mission is to make sustainability a core value of our congregation through conservation, education, social policy, worship, leadership, and action.

For more information or to sign up to volunteer, please contact [earth@templeshalomdallas.org](mailto:earth@templeshalomdallas.org)



## Dallas Area Interfaith

Temple Shalom is a member of DAI, an organization of faith & community based organizations. DAI helps Temple Shalom fulfill the social action inherent in Tikkun Olam by joining us with other organizations & individuals concerned with the issues that affect our community and those who live in it.

**For information on DAI efforts contact Barry Lachman at [blachman@sbcglobal.net](mailto:blachman@sbcglobal.net) or 214-808-0042. Live your values by participating in DAI!!**



## Embrace is an interfaith women’s group between Jews, Christians & Muslims.

We welcome new members. If you would like to join, please contact Temple Shalom Embrace Chair Jane Lachman at [embrace@templeshalomdallas.org](mailto:embrace@templeshalomdallas.org) or phone or text (214) 808-0043.

**TEACH ENGLISH  
WITH TEMPLE SHALOM**  
HELP THE TIKKUN OLAM COUNCIL  
CHANGE THE LIVES OF  
REFUGEE WOMEN & FAMILIES  
EMAIL [ESL@TEMPLESHALOMDALLAS.ORG](mailto:ESL@TEMPLESHALOMDALLAS.ORG)  
ONLINE TEACHING & TRAINING  
AMAZING STUDENTS & TEACHING TEAM  
LAUGHTER & LEARNING

**BROTHERHOOD**

- President.....Louis Marx
- Executive VP.....James Darling
- VP Membership.....Steve Weintraub
- VP Programming.....Mark Fisher
- Financial Director.....Bob Landers
- Treasurer.....Perry Zidow
- Recording Sec'y.....Ron Wichter
- Marketing Director.....David Arndt
- Immed. Past Pres.....Roy Flegenheimer



**Thursday, February 15**  
**6:30pm**  
**The Midway Point**  
14831 Midway Rd #101, Addison

Please RSVP to: Barry Brown [jabbrown@gmail.com](mailto:jabbrown@gmail.com), 214-435-5559 so we know how many to plan for.



**Shop Tom Thumb.**  
**Mention this number at the check-out station: 1549**  
**PLEASE SHOP WITH YOUR TOM THUMB CARD.**

**Brotherhood will be leading services and Torah Study the weekend of February 23-24.**

**Join with us.**

Volunteers for TSB Shabbat should contact Paul Jacobs: [paul.jacobs9876@gmail.com](mailto:paul.jacobs9876@gmail.com).

*You can follow Brotherhood on Twitter@TSBrotherhood and you can like us on Facebook*  
[www.facebook.com/tsbrotherhood](http://www.facebook.com/tsbrotherhood)

**Martinis and Mishnah**  
**Thursday, February 29**  
**6:30pm**  
**Watch the Weekly Emails for Location**  
Contact Mark Fisher [dallasfish@aol.com](mailto:dallasfish@aol.com) for more information and to RSVP.



**B'hood Board Meeting**  
**Tuesday, February 20**  
**7:15pm**  
**Boardroom**

All Brotherhood members are welcome to attend.

**Special Thanks to all of the Brotherhood Shalom Award Sponsors and Underwriters.**

## SISTERHOOD

### Hours:

**Sundays:** 9:30am - 12:30pm

**Tuesdays:** 11:00am - 2:00pm

**Fridays:** 2:00pm - 6:25pm

# Traditions

✠ The Premier Judaica Shop at Temple Shalom ✠

Traditions is proud to carry a NEW collection of merchandise from the Israel Museum in Jerusalem, all handmade in Israel. We also carry Judaic and non-Judaic items from local artists and around the world that are perfect for any occasion or everyday use.

Come see us to make your next gift an amazing one!

- Large selection of tallitot
- Gift cards
- Judaica for home, friends and family
- Greeting cards
- Books for children and adults
- Ceremonial items

#### Hamsa Wall Hanging with Bird Motif

Modeled on a hamsa from Jerusalem or Morocco, first half of the 20th century.



#### Need to come shop at a different time?

Contact Ellen at [melloellen@aol.com](mailto:melloellen@aol.com) or Laney at [laney229@gmail.com](mailto:laney229@gmail.com) or 469-964-5319

*TRADITIONS HAS A TRADITION OF GIVING BACK:*

*All profits go back to Sisterhood and Temple Shalom to support their missions and programs.*



### A DAY IN THE LIFE OF A LEGISLATIVE ASSISTANT

Thursday, February 1

7:00pm / via Zoom

Have you ever wondered how your YES Fund donations are used or how URJ keeps up with all of the legislative issues that are important to us as Jews and women? Come hear from Rachel Landis, URJ's Legislative Assistant. Rachel's legislative portfolio includes reproductive health and rights, and a partnership with WRJ. All or part of her salary is paid by the YES Fund. A Q&A will follow her talk.

RSVP to Robyn at [rcarafiol@robinsonclay.com](mailto:rcarafiol@robinsonclay.com) for the Zoom link.



### SISTERHOOD/BROTHERHOOD BOOK CLUB

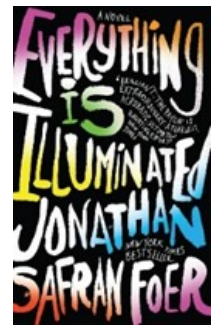
Saturday, February 3

1:45pm / Home of Jill Dunn

SH/BH Book Club will meet for the first time in 2024 to discuss the novel, *Everything is Illuminated*, by Jonathan Safran Foer. Jill Dunn will lead our discussion. This story begins with a yellowing photograph that leads a young man, Jonathan Safran Foer, on a

journey to find the woman who might or might not have saved his grandfather from the Nazis. Traveling with an old man haunted by memories of the war, an amorous dog named Sammy Davis, Junior, Junior, and the unforgettable Alex, a young Ukrainian translator who speaks in sublimely butchered English, Jonathan is led on a quixotic journey over a devastated landscape and into an unexpected past.

Please RSVP to Sabrina at [skeldonsabrina@gmail.com](mailto:skeldonsabrina@gmail.com).





## SISTERHOOD



**Sisterhood Tikkun Olam Project**  
**LUNCH AND LOOM**  
**Sunday, February 4**  
**12:00pm - 3:30pm**  
**Learning Center**

**Everyone** is invited to join us for a Pot Luck lunch followed by a tutorial about Passing Hats, a 501c3 organization whose mission is to add warmth and comfort to cancer patients through a hat made with love. People will be there to teach you to make a hat using a round pegged loom. You do not have to know how to knit or crochet. It is simpler than making the potholders we all made as kids.

More information about Passing Hats, can be found at <https://passinghats.org/>

If you think you might like to participate, please notify Sheila Frank [slf170@yahoo.com](mailto:slf170@yahoo.com) as soon as possible for further information and for planning purposes.



**SISTERHOOD GOURMET LUNCH**  
**Friday, February 9**  
**12:30pm**  
**Selda Mediterranean Kitchen and Bar**  
**6006 Belt Line Rd, Dallas**

Come join your friends for some great food and conversation.  
Please RSVP by February 5<sup>th</sup> to Toba at [Reifernotary@gmail.com](mailto:Reifernotary@gmail.com).



**ROSH CHODESH ADAR 1**  
**Saturday, February 10 / 1:00pm**  
**at the home of Alice Rosen**

Come celebrate the Jewish ritual of Rosh Chodesh — women coming together on each new moon to reset, reflect, and connect. This month we will celebrate the month of Adar 1 with a little Gal-intine and learn about Dinah. Join our community centered around Jewishness, connection, and self-discovery. All ages and stages of life are welcome. Our hosts will be Laurel Fisher and Laney Arndt.

RSVP to Laney at [laney229@gmail.com](mailto:laney229@gmail.com) to let us know you are coming and for Alice's address.



**Temple Shalom Sisterhood**  
**CHAI and Congregational Dinner**  
**Friday, February 16**  
**Traditional Chicken Dinner: 5:00pm in the Radnitz Social Hall**  
**Shabbat Service with special guest Cantor Lisa Levine**

***See Page 5 for Reservation Information.***

## SISTERHOOD



### VIRTUAL BOGGLE GAME NIGHT

Thursday, February 21

7:00pm / via Zoom

Join Staci Mendelsohn as she hosts another fabulous virtual game night. Virtual Boggle is similar to the game you are probably already familiar with where you try to find as many words as you can from the jumbled letter tiles. All directions will be explained; all you need is a piece of paper and something to write with!

Zoom link will be sent after your RSVP to [Reifernotary@gmail.com](mailto:Reifernotary@gmail.com).



### Sponsor a Wine and Cheese AND Recognize a Special Occasion

Sisterhood is taking sponsor for any Friday night Wine and Cheese Reception (other than Bar/Bat Mitzvahs). For \$36 you could recognize a birthday, wedding, graduation, yahrzeit, or any other reason. The lovely spread will include a sign recognizing your sponsorship. <https://tsdsisterhood.wufoo.com/forms/qli3ris18cjoy/> or contact Chris Harris for more details at [nansnotes1@gmail.com](mailto:nansnotes1@gmail.com).

Is it your turn to purchase wine for the Friday night reception? You can now pay online at <http://tinyurl.com/onegwine>. You may also mail a check, payable to Sisterhood. Please indicate Wine Donor on your check.

# GRATITUDES

## Adult Education

### in honor of

Adult Education

Patsy & Michael Hochman  
Charitable Foundation

### in memory of

Chester Snyder & Fred Zimring  
Richard Berlin

Nathan & Leslie Axelrod  
Jean Berlin

## Brotherhood

### in honor of

Bob Weinfeld

Toby Stone  
Joan Sherman  
Sandra & Richard Brochstein  
Michael & Amy Roseman

### in memory of

Louis Gureasko

Jacqueline Marx

## Building & Grounds

### in memory of

Sylvia Pessin

Mark Pessin

## Caring Congregation

### in honor of

Bob Weinfeld

Lee & Rochelle Wunsch

### in memory of

Ruth Axelrod  
Irving Stern & Nicholas Stern  
Stella Bega-Levi & Angela Punzi-Levi  
Shirley Kessner & Sadie Solomon  
Irene Weiner  
Elaine Applebaum

Nathan & Leslie Axelrod  
Annette Gersh  
Alex Levi  
Elaine Solomon  
Michael & Susan Weiner  
Wayne & Beth Applebaum

## General Fund

### in honor of

Nina Gershonowitz & Eric Horowitz  
Ryan Schamerloh

Susan Gellert  
Ethel Zale  
Zona Pidgeon

### in memory of

Joseph & Muriel Cohen  
Bobbie Berger

Alan Cohen  
Rabbi Murray Berger

## Greene Family Camp Fund

### in memory of

Jack Introligator

Mark & Beth Stromberg

## Julia Michele Warren Scholarship (GFC) Fund

### in honor of

John Warren

Julia Mattingly

### in memory of

Jack Introligator

David & Mattie Sorrentino  
Ralph & Debbi Sorrentino  
Aric & Karen Stock  
Glenn & Staci Mendelsohn

### in honor of

Justice Garden

Spring Valley United  
Methodist Church  
Steven & Ann Weintraub  
John Walsh  
Slaney Ross  
Nancy Marcus  
Alyssa Gruen

## Music Fund

### in memory of

Bette Jean Cohen  
Harold Greenstein  
Helen P. Miller  
Max Gordesky & Rae Isaacson  
Ethel Abrams & Gertrude Abrams

Preston & Judy Vice  
Jeffrey & Monica Susman  
Cary & Abbey Begun  
Ellen Gordesky  
Ellen Gordesky

## President's Good Works Fund

### in honor of

Ryan Schamerloh

Kelly Barker

## Rabbi Paley's Discretionary Fund

### in honor of

Rabbi Paley

Laurie Berger & Brian Levine  
Marsha Ring

Ryan Schamerloh  
Reesa Portnoy & Raelaine Radnitz

Richard Rothbard  
Harriet Reich

## speedy recovery to

Maureene Timken

Susan Hoffman & Sam Gottlieb

### in memory of

Michele Garson & Howard Garson  
Sidney Abraham

Scott Weismann  
The Sidney & Marilyn Abraham  
Family Trust

Evelyn Schentes  
Lore & Kuba  
Markusfeld

Debra Cohen  
Joseph & Evelyn Hillenbrand

Miriam & Isaac  
Hillenbrand

Joseph & Evelyn Hillenbrand

Richard Reuler  
Joseph Bernstein

Melanie Reuler-Finn & Tom Finn  
Kenneth Bernstein & Barbara Clay

Irving Warner, MD  
Shirley Kavensky

James & Theresa Warner  
Toby Stone

Jack Introligator

Elizabeth Wain

Mae Stein & Sam Stein

Steven & Debra Kerper

Bette Jean Cohen  
Philip Parker

Barry & Barbara Brown  
Kenneth & Judy Parker

Jay Stevens  
Jack Introligator

Gregg & Carole Stevens  
Steve & Allison Harding

Beril Susman

Joyce Susman

Beate Gureasko

Jacqueline Marx

Shirley Stolar Kessner  
Susan Chernoff  
Dean Milkes

Richard & Susie Solomon  
Gale Malinger  
Shelley Van Derven & Joe Milkes

Joan Marmurek & Sylvia Shapiro

Alan & Rose Taper

Ethel Malinger

Gale Malinger

## GRATITUDES

### Security & Safety

#### in memory of

Joseph Cohen	Jack & Rhonda Cohen
Deborah Locandro & Robert E. Presby	Paul & Carol Preite

### Sisterhood

#### in memory of

Dorothy Bemel	Allison & Barry Silverman
Leon Rudnick	Ellen Feibel

### Temple Shalom Endowment

#### in honor of

Ryan Schamerloh	Kim Schocket
	Marilyn Schnitzer
	Mona Friedman

#### in memory of

Harold Barishman	Steve & Karen Lewis
Sidney Abraham	Kenneth & Sherry Goldberg
Arnie Bier	Margaret Smith
Iona Strazhnik	Arkady & Galina Strazhnik
Mary Davenport Baseman & Jack Introligator	The Eichelbaum Family

### Tikkun Olam/Social Action

#### in memory of

Elsie Miller & Joe Wolens	Bette Miller
---------------------------	--------------

### Youth & Family Education

#### in honor of

Alexa, David & Samantha Falk	Kirschner-Bookatz Family Foundation
------------------------------	--

#### in memory of

Sidney Abraham	Irwin & Dawn Kaufman
	Larry & Celia Schoenbrun
Sidney C. Abraham & Sondra Faye	Ralph & Debbi Sorrentino
Marcia J. Wolfe	Debra Thomas

**If you would like to make a contribution to Temple Shalom, please visit our website, [www.templeshalomdallas.org](http://www.templeshalomdallas.org) and look for the “donate” button on the home page. The office will send an acknowledgement to the recipient.**

### Remember the Temple in Your Will

Temple Shalom is committed to preserving the future of our congregation for generations to come. Bequests of all sizes are important resources for the Temple, and we encourage you to be a link to the future by remembering the Temple in your will. For more information, please contact our Executive Director David Lamden at 972-661-1810 x202. Your planned gift will serve the future of our congregation and community. Thank you for helping assure the strength and health of Temple Shalom for generations to come.



# KADDISH

*May their memory be a blessing.*

## February 2

Bessie Abraham  
John Abraham  
Nash Beever  
Carolyn Kahn Blum  
Samuel Bornstein  
Lillian Brown  
Rahil Burshtein  
Tillye Cornman  
May Croll \*  
Michael Dwyer  
Elizabeth Eichelbaum \*  
Sam Erenstein  
Isadore Falk  
Lynda Friedlander  
Jesse Friedman  
Theodore Garber  
Beatrice Gottlieb  
Isidore Gottlieb  
Sam Gray  
Sylvia Haberman  
Elaine Kadashaw  
William Leonard  
Ethel Rose Levy  
Florence Levy  
Marjorie K. Lewis \*  
Martin L. Litwin  
Dasya Livshits  
Peter Livshits  
Andy Mange  
Ernest Nasher  
Elyse Joyce Ravkind \*  
Marian Judith Reichle \*  
Laura Gallant Romick \*  
Doris S. Silver \*  
Bessie Silverman  
Ronald Silverman  
Lillian Singerman  
Eve Gaymont Sparberg  
Burt Troyan \*  
Daniel Tuman  
Leslie A. Wise

## February 9

Martin Ackerman  
Irving Anker  
Anne Arons  
Ivan S. Baum  
Sol Binder \*  
Sarah Blumberg  
Raye Bromberg  
Ronald Byers  
Steve Chown  
Simon Cohen  
Leon Epstein  
Paula Feldman  
Max E. Goldberg  
Jacob "J.B." Hochstein  
William Jackofsky  
Louis Kirschner  
Florence Leibowitz Krantz  
Rose Laner  
Barnet Levy  
Martin Levy \*  
Regina Litt  
Harry Madorsky  
Doris Meltzer  
Olga Ofseyer  
Sylvan Ray  
Nina Rostler Rosenfield  
Dolores Salzman  
Marion Schulman \*  
Sandy Segal  
Laura Smith  
Joseph Switzer  
Hershel Zale \*

## February 16

Ethel Abrams  
Alfred Beer  
Philip Berman  
June Bierman  
Alan Bliss \*  
Donald Brandt  
Melvin Cannon  
Helen Cohen

Jerome Drucker \*  
Theodore G. Echlov  
Leo Fields  
Eva Fishman  
Helen Copeland  
Freedman  
Samuel Gersh \*  
Danny Glazer  
Raymon Goldstein  
Dora Greenberg  
Jack Gulton  
Sondra Hauser  
Adolph Herskowitz  
Mary Lou Kahn \*  
Jerome Kasten \*  
Craig Kavensky  
Lucille Klein  
Efraim Kochurovsky  
Norman Krizelman  
Shirley Lande  
Joseph Leanza  
Dorothy Lerner  
Seymour Lieberman  
Edward Manaster  
Marilyn Manaster  
Michael Paul Matta  
Marianne Pfenig  
Richard A. Reuler \*  
Harry Siegelbaum  
Mathilde Spett  
Gene Taper \*  
Marvin Victor  
William Wyman

## February 23

Mona Beck  
Arnold Berger  
Betty Berger  
Lewis Norman Bernard  
Carol Bomash  
Harry Weiss Brand \*  
Sylvia Clifford  
Richard Croll

Walter Eckhouse  
Anna Efseroff  
Larry W. Feldman  
Dorothy Flax  
Rolfe Floyd  
Mary Golenternek \*  
Bessie Goodman \*  
Edward Gothard  
Mischelle Hoiser  
Eduard Kunyavskiy  
Felice Lieberman  
Sheri Marsh  
Molly Ortenberg  
Klara Royf  
Genevieve Sankary  
Alvina Shutan  
Ella Silverstein

*\* Indicates a permanent plaque which will be illuminated during the anniversary week of the yahrzeit for this person. Please contact Joy Addison at [jaddison@templeshalomdallas.org](mailto:jaddison@templeshalomdallas.org) if you would like information on ordering a plaque.*

## **Nationwide Online Reporting System for threats or suspicious activity relation to Jewish organizations or communities.**

Once a report is made, security agents determine the urgency and, if necessary, work with the FBI or other law enforcement partners. The information from the reports can also be used to keep better data on incidents, learn who is behind the threats, and track cases across communities. People can use their computers, tablets or cell phone to fill out the reports.

### **Report a Threat, Incident, or Suspicious Activity**

<https://www.securecommunitynetwork.org/incidentreporting>

### **The online membership directory is updated periodically.**

Please send any changes to [jaddison@templeshalomdallas.org](mailto:jaddison@templeshalomdallas.org)

If you need assistance accessing the directory on our website, please contact Joy at the above email.

### **Temple Shalom is a Member of the Kroger Rewards Program**

\*Customers must have a registered Kroger *rewards* card account to link to our organization. \*If you do not yet have a Kroger *rewards* card, they are available at the customer service desk at any Kroger. New users will need to create an account which requires some basic information, a valid email address and a *rewards* card.

To participate once you have a registered card, visit <http://www.kroger.com>.

**Once logged into your Kroger account you can search for Temple Shalom either by name or**

**KP989 and then click Enroll. REMEMBER,** purchases will not count until after you register your *rewards* card and select Temple Shalom. You must swipe your registered Kroger *rewards* card or use the phone number that is related to your registered Kroger *rewards* card when shopping for each purchase to count.



### **Temple Shalom Brotherhood is also connected with Tom Thumb and gives a portion of those proceeds to Temple.**

Click here for more information.

<https://templeshalomdallas.org/shop-benefit-temple-shalom/>



### **OMBUDSMAN**

If you have a question, comment, or complaint regarding something at Temple Shalom you logically might raise your issue with Rabbi Paley, President Eichelbaum, a member of our Executive Committee, or a staff member. However, if you would like an independent channel to look into your issue then our ombudspersons are the place to go. Our two ombudspersons are Myron Schwitzer and Lory Kohleriter. They each have been members of our temple community for over 50 years and are very knowledgeable about a lot of Temple details. They may be able to give you a response for your issue when you contact them, but, more than likely they will want to research it so they can get back to you with a fully developed response.

Please reach out to them at [ombudsperson@templeshalomdallas.org](mailto:ombudsperson@templeshalomdallas.org) if you prefer to go to someone not aligned with the issue you wish to discuss.

## Of Blessed Memory...

- ✧ Temple member Mary Davenport Baseman, wife of Jonathan Baseman
- ✧ Temple member Dorothy “Deje” Bemel
- ✧ Temple member David Shusterman, partner of Hilary Sherman
- ✧ Morris “Mike” Goldin, grandfather of Brooke Kreitman
- ✧ Jack Introligator, father of Meredith Pryzant

## Congratulations to...

- ✧ Temple members Nina Gershonowitz and Eric Horowitz on their engagement
- ✧ on the birth of David Shusterman’s great-granddaughter Lily June Katz, daughter of Mackenzie and Jared Katz
- ✧ Debbi and Ralph Sorrentino on the birth of their grandson Thomas Paul Sorrentino, son of Mattie and David Sorrentino
- ✧ Great grandmother Elaine Solomon and great aunt and uncle Susie and Richard Solomon on the birth of Solomon Cohn-Wein, son of Leslie and Eli Cohn-Wein

## Welcome New Members of the Temple Shalom Family

- ✧ Adam and Jocelyn Rigel
- ✧ Tatyana Taylor

**Pastoral Care** Please help us be a caring congregation by letting us know when you, a family member or another member is ill, has a procedure, a death occurs or other pastoral needs arise. We also want to know about mitzvot like babies, colleges, new jobs, etc.

### Pastoral care contact information for members:

**Phone:** 972-661-1810 x 226 (Donna Mitchell, Clergy & Lifelong Learning Assistant)

**Email:** [pastoralcare@templeshalomdallas.org](mailto:pastoralcare@templeshalomdallas.org)

**Web:** [templeshalomdallas.org](http://templeshalomdallas.org)

Home Tab, Contact Us option

**Emergency Number:** 214-295-9630

***Our Mission: Temple Shalom builds holy community, connecting our congregation to one another, to God, Torah, Israel and the Jewish people through worship, study, gathering and community service.***

Do you know someone we should invite to Temple, someone who is new to Dallas or is not connected to a congregation?

Please contact Executive Director David Lamden [dlamden@templeshalomdallas.org](mailto:dlamden@templeshalomdallas.org) so we can show them that Temple Shalom is their place.

# TEMPLE SHALOM

Senior Rabbi.....Andrew M. Paley  
Cantor Emeritus.....Don Alan Croll  
Executive Director.....David Lamden  
Director of Lifelong Learning....Deborah Niederman  
Coordinator of Belonging.....Monica Susman  
Music Coordinator.....Mandy Monreal  
President.....Dennis Eichelbaum  
Exec. Vice President.....Theresa Myers  
Vice President.....Terry Abel  
Vice President.....Stephanie Hirsh  
Finance Director.....Joel Guskin  
Treasurer.....Gail Enda  
Secretary.....Laurel Fisher  
Past President.....Debra Levy-Fritts

### Affiliated with:



# DALLAS HOLOCAUST AND HUMAN RIGHTS MUSEUM

**Temple Shalom is Proud to be a  
Community Partner  
for the following Programs.**

**Registration is Required for all events:**

Go to <https://www.dhhrm.org/programs-and-events/> to order your tickets.

## **Funk Family Upstander Speaker Series**

*Funk Family Upstander Speaker Series showcases individuals and organizations who stand up for human rights on a local, national, or global level. Named in loving memory of Blanch & Max Goldberg | Fannie & Isaac Funk.*

**Tuesday, February 20**

**6:00pm Reception, 7:00pm Program**

### **Panelists**

**Joseph Kim** was five years old when famine came to North Korea. He and his family, along with millions in the country, struggled to survive. When Joseph was 12, his father died of starvation, and he was separated from his mother and sister. Now homeless, Joseph was placed in a detention center and labor camp for children. Knowing the odds of survival were against him, he escaped into China and ultimately came to the United States as a refugee with the help of missionaries and the international NGO, Liberty in North Korea (LiNK). Today, Joseph is an Associate and Expert-in-Residence, Freedom and Democracy at the George W. Bush Institute. He continues to speak out about human rights abuses in North Korea, the importance of human dignity for all, and the impact hope can have on the fight for freedom and democracy.

**Hannah Song** is CEO of Liberty in North Korea (LiNK). She joined in 2006 as Deputy Director, managing day-to-day operations and coordinating overseas programs, including underground shelters and refugee resettlement efforts in the United States and in South Korea. At the end of 2008, she became CEO, re-founding the organization with a new mission and vision. Prior to joining LiNK, Hannah worked in advertising at OgilvyOne and Mindshare focusing on digital media and emerging technologies. She is a 2008 NetKAL fellow and a 2016 Ashoka Korea Fellow.

**Liberty in North Korea** is an international NGO working with the North Korean people to achieve their freedom. LiNK has helped over 1,300 North Korean refugees and their children escape through a modern-day underground-railroad, supporting them in their new lives in freedom and helping build their capacity as storytellers, advocates and agents of change. LiNK also develops strategies and tools to increase North Korean people's access to outside information and technology inside the country.

*For almost 20 years, we've been here for you*

**Robinson  
Clay  
Team**

**Track your home value  
at RobinsonClay.com**



**Bradbury** | **Robyn**  
**Robinson** | **Clay**  
**Crumpecker** | **Carafiol**

**Robyn Carafiol • 214-460-8016 • RCarafiol@RobinsonClay.com**

The Robinson Clay Team / Keller Williams Dallas Midtown • 9850 N Central Expy, Suite 204 • Dallas, TX 75231